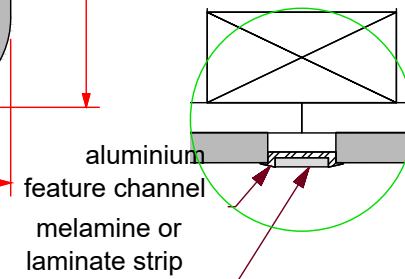
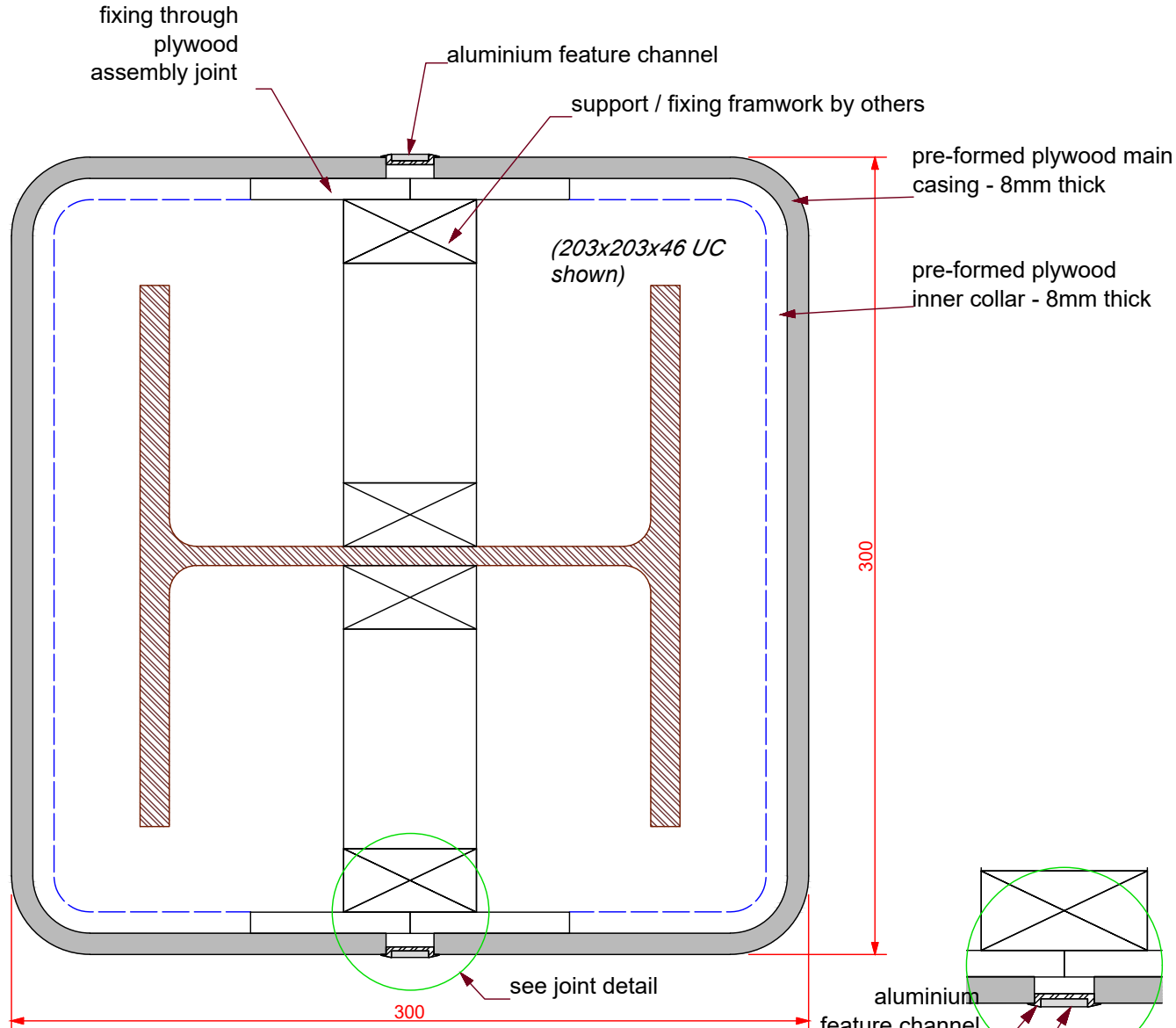
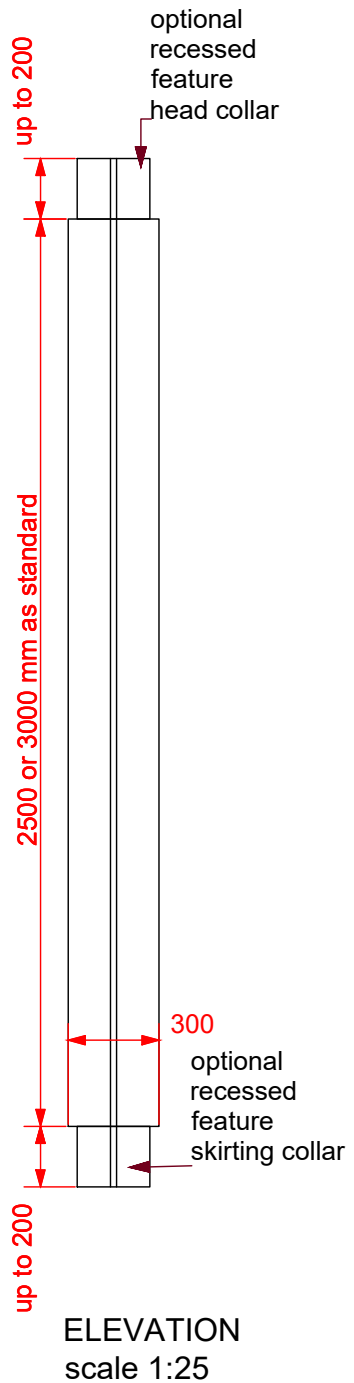


Encasement Ltd  
t: +44 (0)1733 266 889  
e: sales@encasement.co.uk  
w: www.encasement.co.uk



standard specification detail:  
type: pre-formed plywood casings  
ref: quadra 300/300  
thickness: 8mm  
length: 2500 and 3000 as standard  
finish: White craft paper, HPL  
sustainability: UKTR compliant and sustainably sourced plywood  
joint detail: aluminium top hat feature channel  
accessories: optional optional recessed feature collars to head and / or skirting, framework system, access hatches  
notes: White craft paper casings have a joint in each face

detail:  
**QUADRA 300/300mm**

date:  
**Nov 2023**

drawn by:  
**AW**

scale:  
**as shown**

paper size:  
**A4**

drawing no:  
**COLUMN CASINGS  
QUADRA 300\_300mm.  
DWG**