

Encasement Ltd  
t: +44 (0)1733 266 889  
e: sales@encasement.co.uk  
w: www.encasement.co.uk

standard specification detail:

type: pre-formed plywood casings

ref: quadra 350/350

thickness: 8mm

length: 2500 and 3000 as standard

finish: White Melamine, HPL

sustainability: UKTR compliant and sustainably sourced plywood

joint detail: aluminium top hat feature channel

accessories: optional optional recessed feature collars to head and / or skirting, framework system, access hatches

notes: White Melamine casings have a joint in each face

detail:

**QUADRA 350/350mm**

date:

Nov 2023

drawn by:

AW

scale:

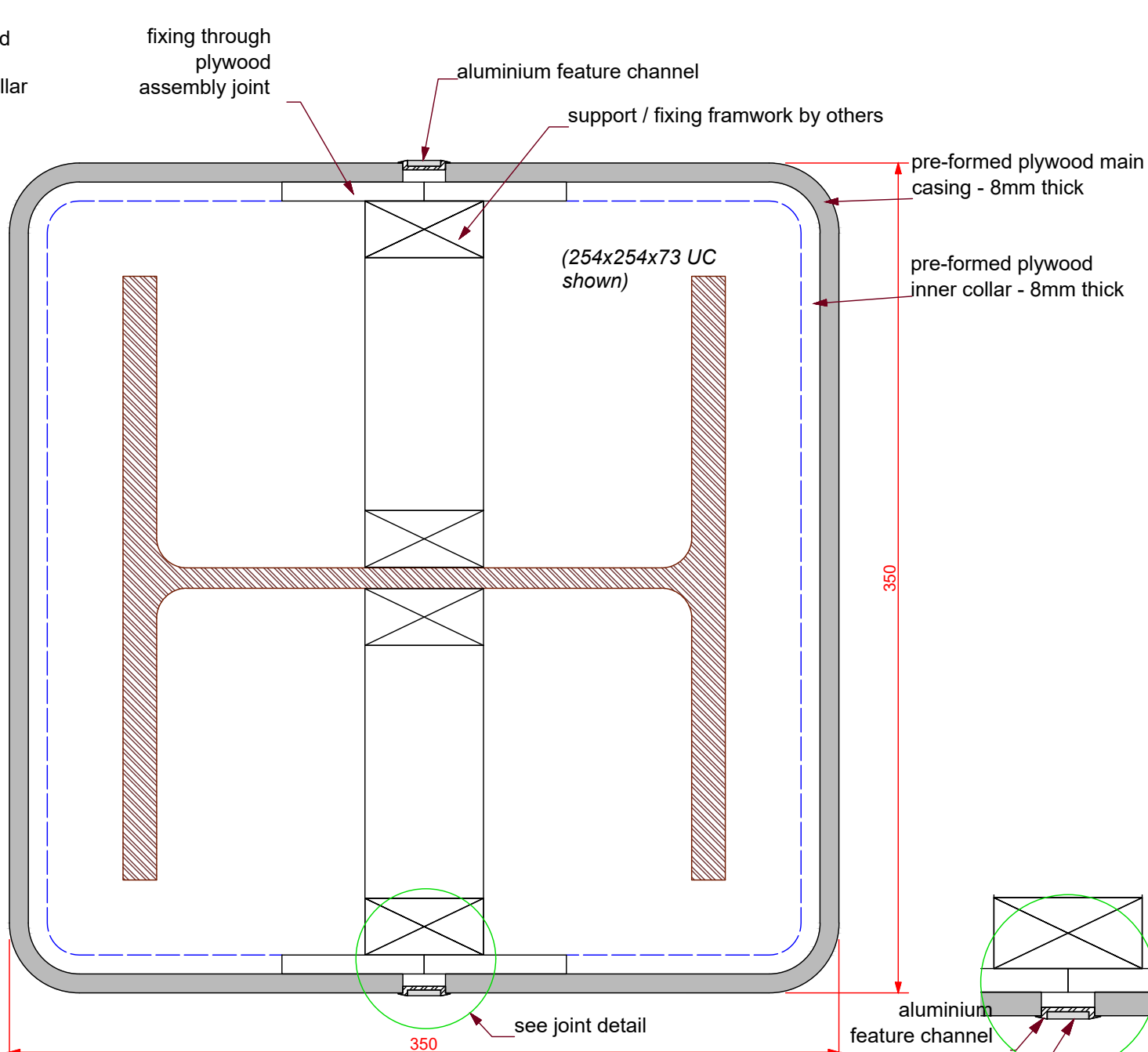
as shown

paper size:

A4

drawing no:

**COLUMN CASINGS  
QUADRA 350\_350mm.  
DWG**



optional recessed feature head collar

fixing through plywood assembly joint

aluminium feature channel

support / fixing framework by others

pre-formed plywood main casing - 8mm thick

pre-formed plywood inner collar - 8mm thick

(254x254x73 UC shown)

2500 or 3000 mm as standard

up to 200

350

up to 200

optional recessed feature skirting collar

350

see joint detail

350

aluminium feature channel  
melamine or laminate strip

**ELEVATION**  
scale 1:25

**PLAN**  
scale 1:2.5

**JOINT DETAIL** scale 1:2