

Encasement Ltd
t: +44 (0)1733 266 889
e: sales@encasement.co.uk
w: www.encasement.co.uk

standard specification detail:

type: pre-formed plywood casings

ref: quadra 300/300

thickness: 8mm

length: 2500 and 3000 as standard

finish: White Melamine, HPL

sustainability: UKTR compliant and sustainably sourced plywood

joint detail: aluminium top hat feature channel

accessories: optional optional recessed feature collars to head and / or skirting, framework system, access hatches

notes: White Melamine casings have a joint in each face

detail:

QUADRA 300/300mm

date:

Nov 2023

drawn by:

AW

scale:

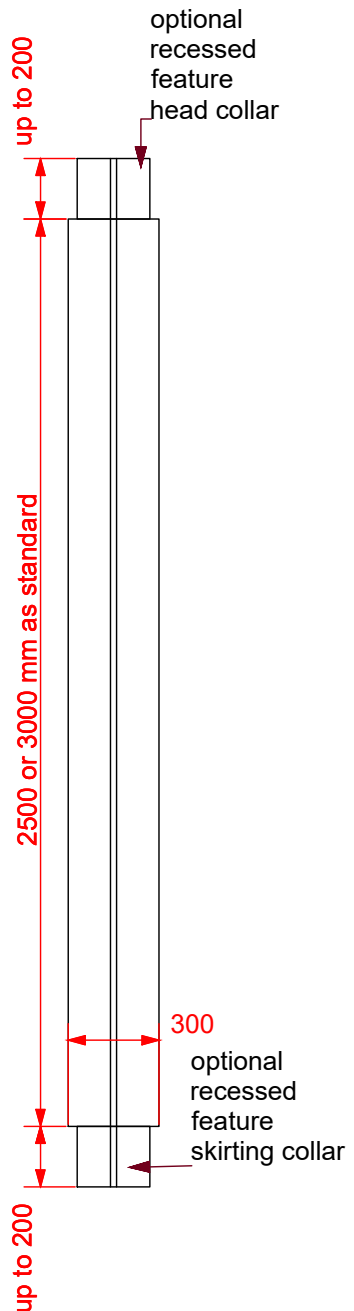
as shown

paper size:

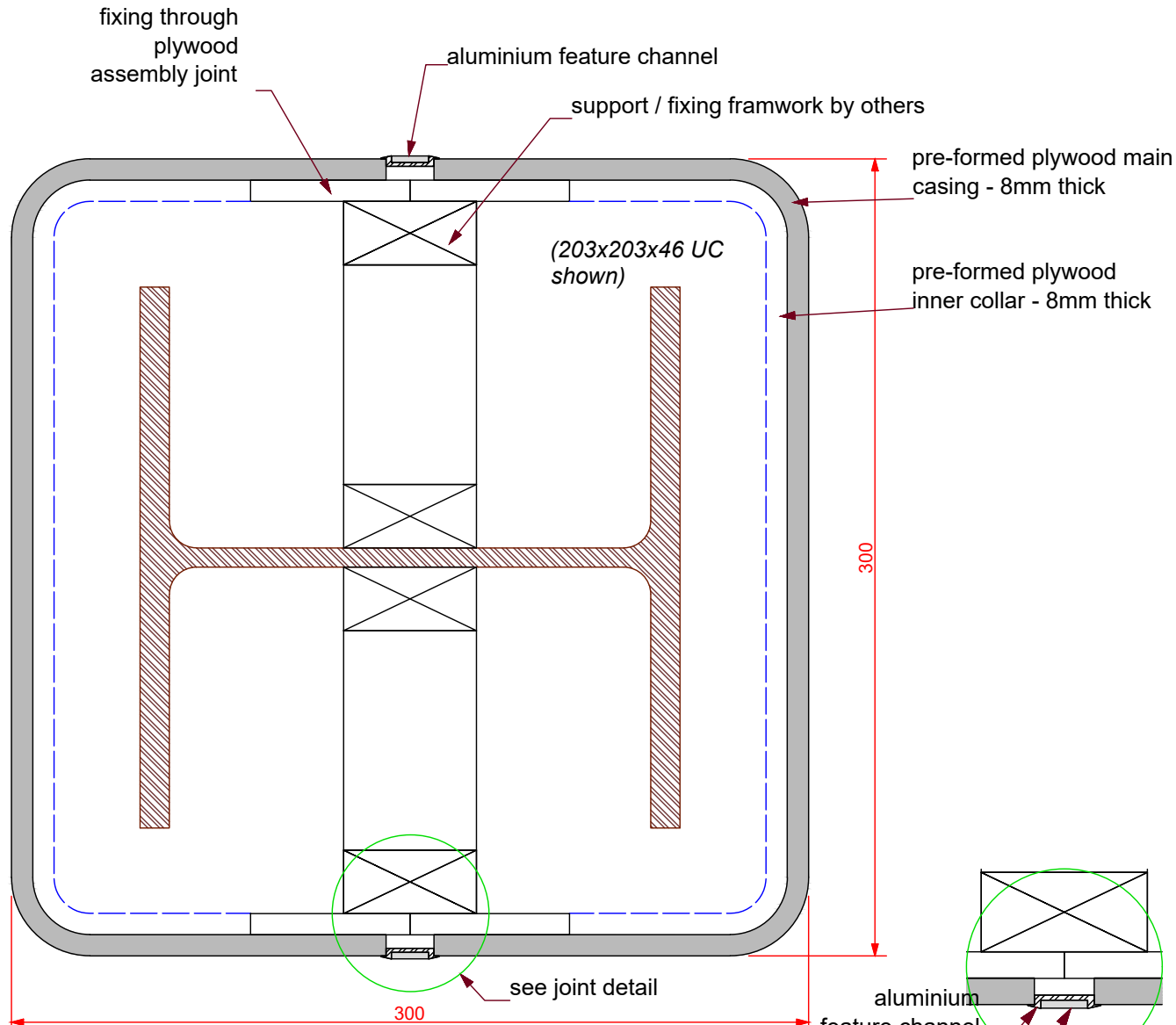
A4

drawing no:

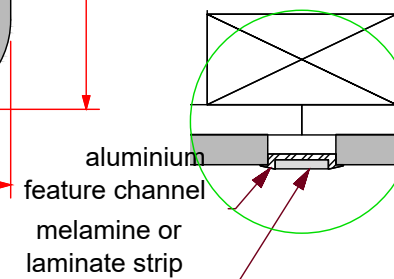
**COLUMN CASINGS
QUADRA 300_300mm.
DWG**



ELEVATION
scale 1:25



PLAN
scale 1:2.5



JOINT DETAIL
scale 1:2