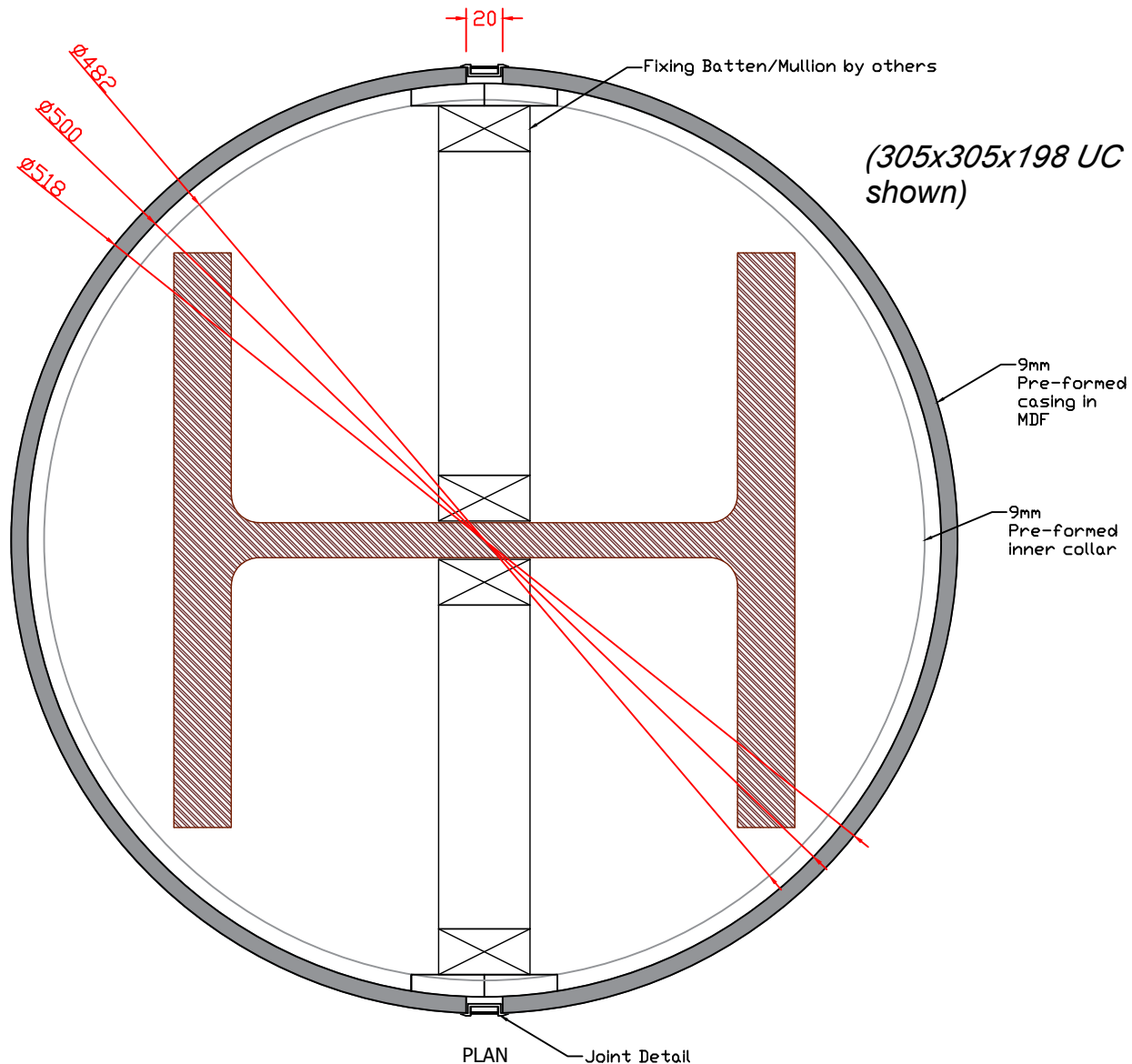
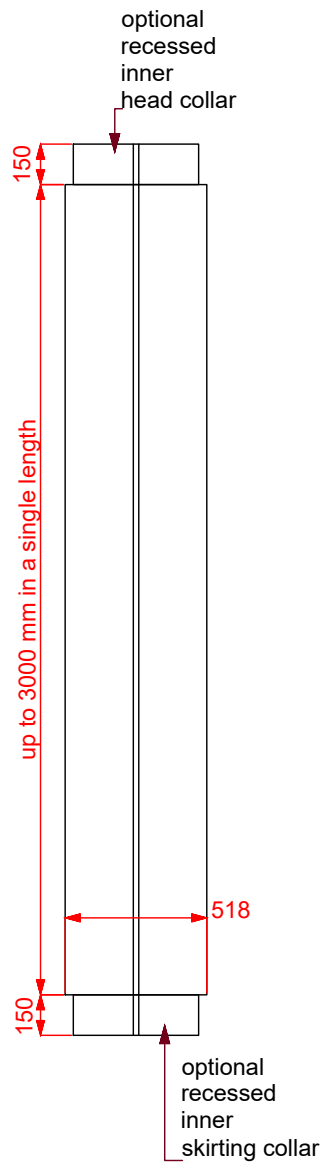


Encasement Ltd
t: +44 (0)1733 266 889
e: sales@encasement.co.uk
w: www.encasement.co.uk



standard specification detail:

type: pre-formed mdf casings

ref: circa

thickness: 9mm

length: upto 3m in a single piece

finish: MDF (paint grade) / HPL

sustainability: UKTR compliant and sustainably sourced MDF

joint detail: aluminium feature extrusion channel

accessories: optional optional recessed feature collars to head and / or skirting / framework system / socket patresses / rolled aluminium horizontal feature joints

detail:

**CIRCA 500mm
DIAMETER**

date:
Nov 2023

drawn by:
JS

scale:
as shown

paper size:
A4

drawing no:
**COLUMN CASINGS
CIRCA 500mm DIA.
DWG**