

Encasement Ltd  
t: +44 (0)1733 266 889  
e: sales@encasement.co.uk  
w: www.encasement.co.uk

standard specification detail:  
type: pre-formed mdf casings  
ref: circa  
thickness: 9mm  
length: upto 3m in a single piece  
finish: MDF (paint grade) / HPL  
sustainability: UKTR compliant and sustainably sourced MDF  
Joint detail: aluminium feature extrusion channel  
accessories: optional optional recessed feature collars to head and / or skirting / framework system / socket patresses / rolled aluminium horizontal feature joints

detail:  
**CIRCA 400mm DIAMETER**

date:  
**Nov 2023**

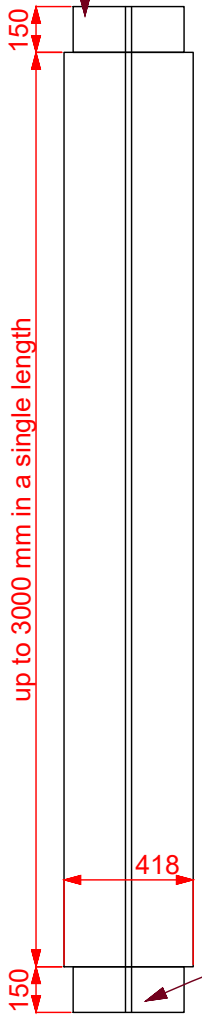
drawn by:  
**JS**

scale:  
**as shown**

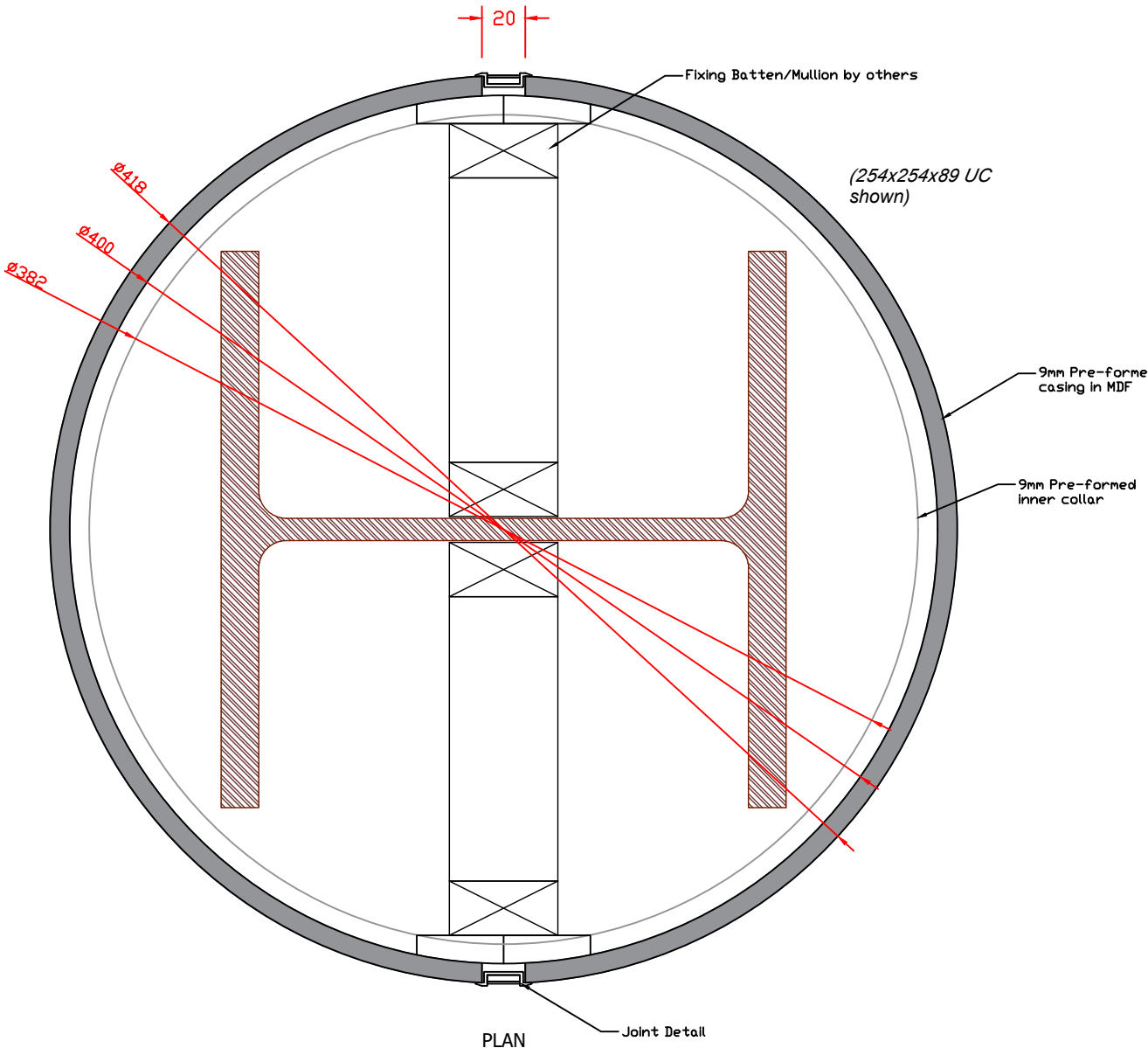
paper size:  
**A4**

drawing no:  
**COLUMN CASINGS  
CIRCA 400mm DIA.  
DWG**

optional recessed inner head collar



optional recessed inner skirting collar



PLAN