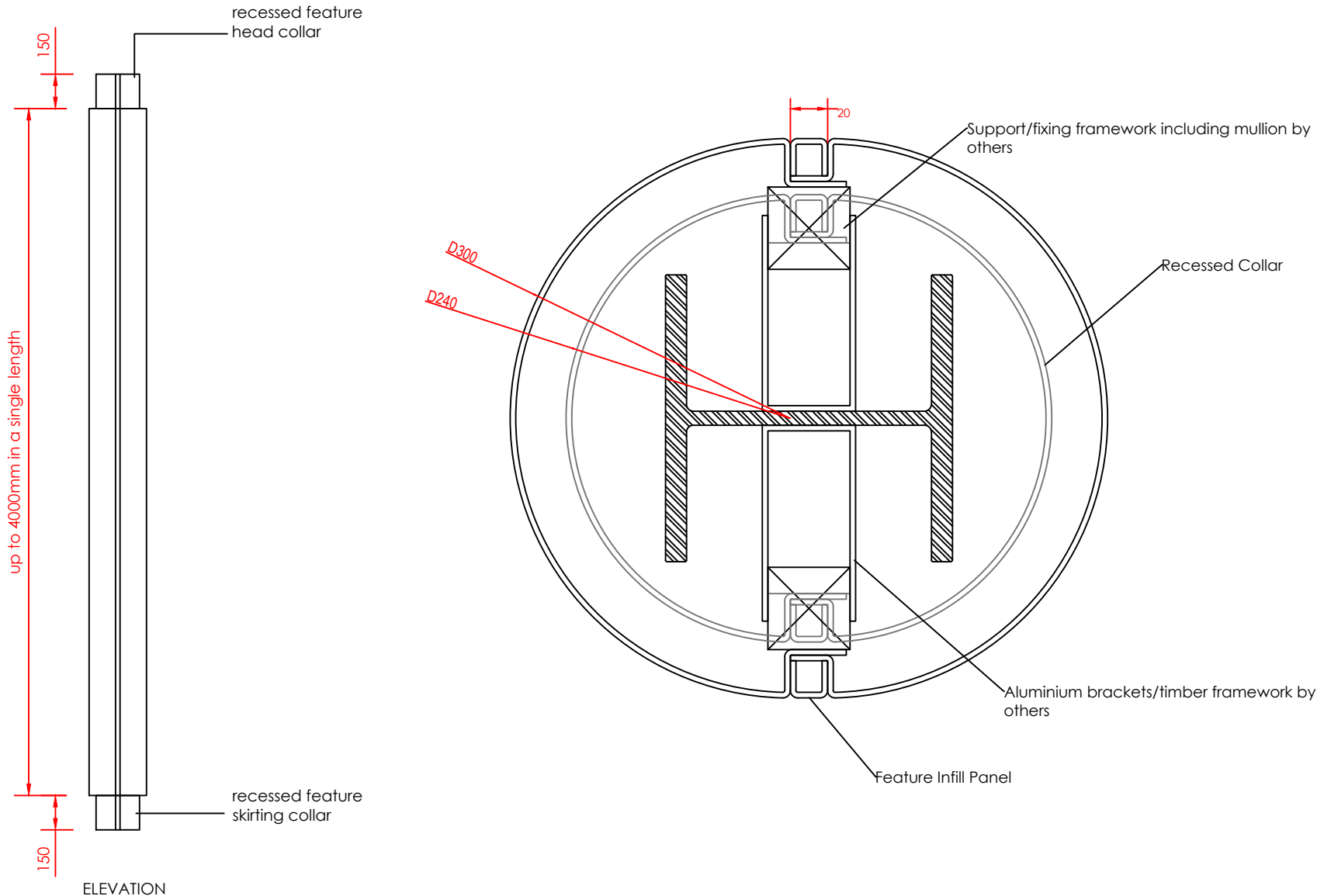


**Encasement Ltd**  
t: +44 (0)1733 266 889  
e: sales@encasement.co.uk  
w: www.encasement.co.uk



**standard specification detail:**

**type:** aluminium / stainless steel / mild steel casings

**ref:** forma

**thickness:** 2mm or 3mm

**length:** upto 4m in a single piece

**finish:** polyester powder coated / anodised / polished

**joint detail:** feature infill channel

**accessories:** optional recessed feature collars to head and / or skirting, internal stiffening braces, acoustic lining, framework system, access hatches, perforations, laser cutting

detail:

FORMA 300mm  
DIAMETER

date:

June 2023

drawn by:

JS

scale:

NTS

paper size:

A4

drawing no:

COLUMN CASINGS  
FORMA 300mm DIA'  
.DWG