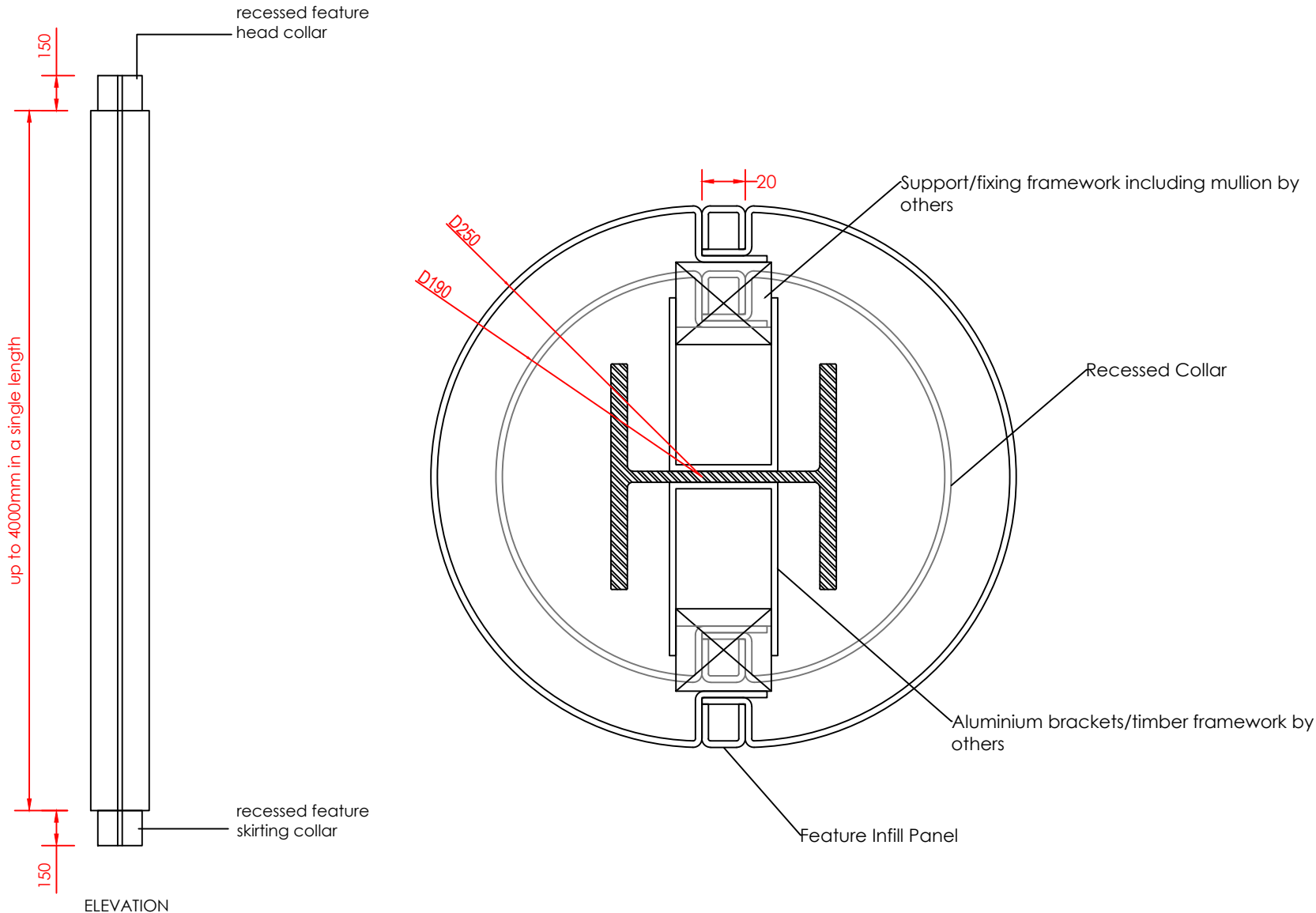


Encasement Ltd
t: +44 (0)1733 266 889
e: sales@encasement.co.uk
w: www.encasement.co.uk



standard specification detail:

type: aluminium / stainless steel / mild steel casings

ref: forma

thickness: 2mm or 3mm

length: upto 4m in a single piece

finish: polyester powder coated / anodised / polished

joint detail: feature infill channel

accessories: optional recessed feature collars to head and / or skirting, internal stiffening braces, acoustic lining, framework system, access hatches, perforations, laser cutting

detail:

FORMA 250mm
DIAMETER

date:

June 2023

drawn by:

JS

scale:

NTS

paper size:

A4

drawing no:

COLUMN CASINGS
FORMA 250mm DIA'
.DWG