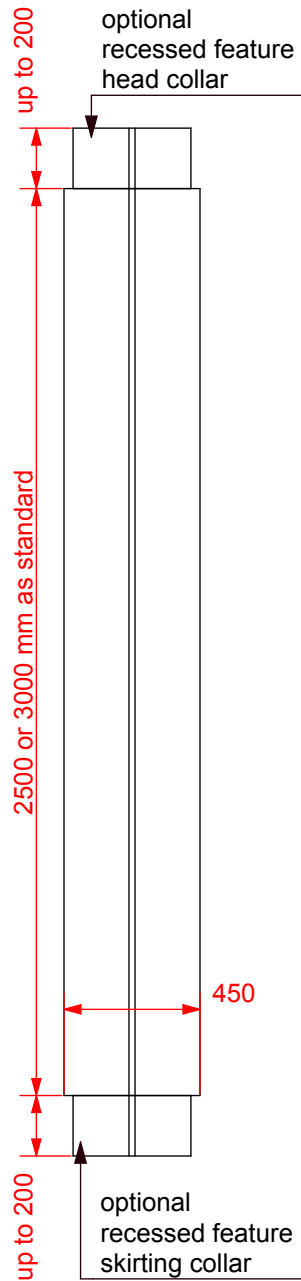
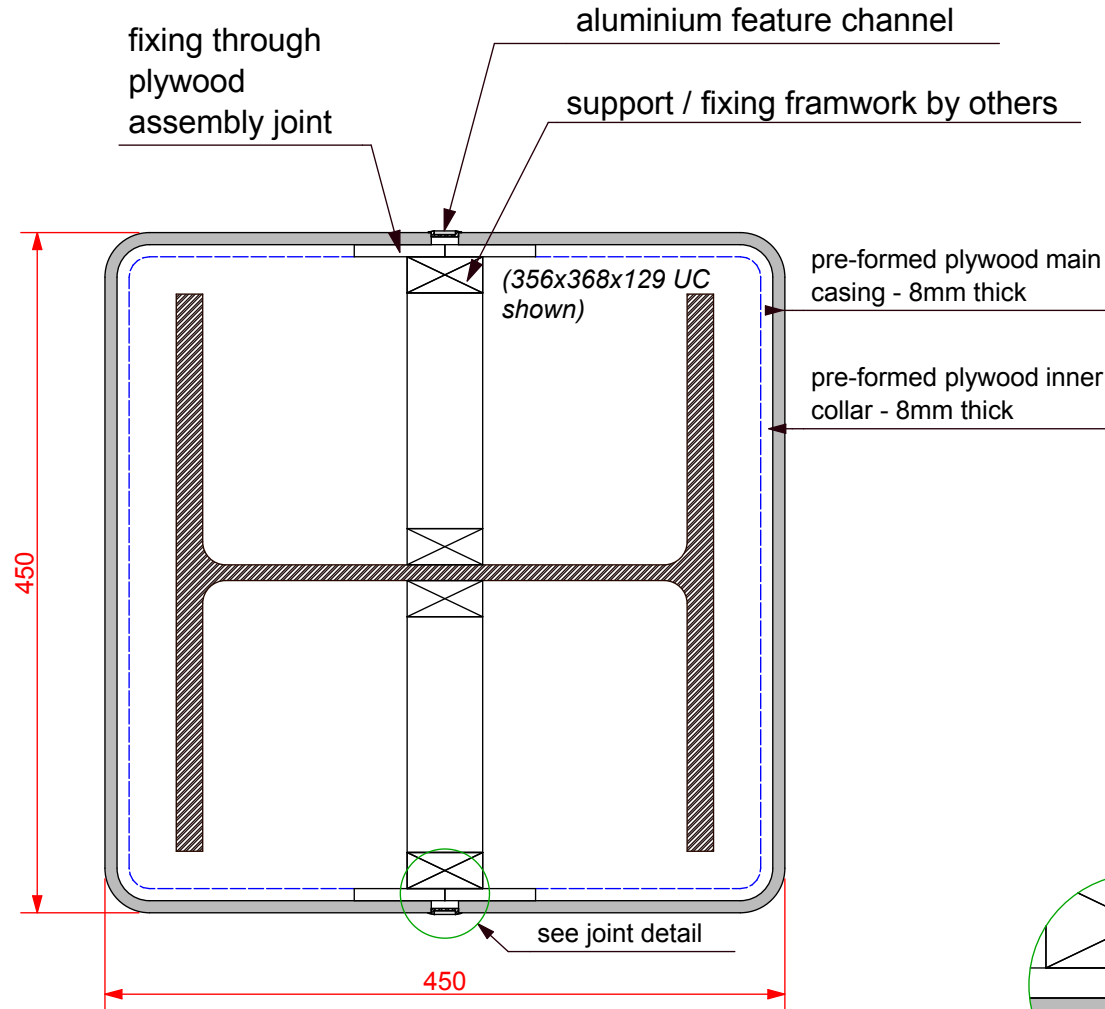


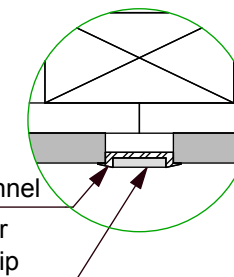
Encasement Ltd  
Peartree Business Centre  
Enterprise Way, Bretton, Peterborough  
Cambridgeshire PE3 8YQ  
t: +44 (0)1733 266 889  
f: +44 (0)1733 268 999  
w: www.encasement.co.uk



**ELEVATION**  
scale 1:25



**PLAN**  
scale 1:5



**JOINT DETAIL**  
scale 1:2

**standard specification detail:**

type: pre-formed plywood casings

ref: quadra 450/450

thickness: 8mm

length: 2500 and 3000 as standard

finish: paint grade (melamine),  
HPL / CPL laminate

sustainability: FSC certified with full  
chain of custody

joint detail: aluminium top hat feature  
channel

accessories: optional optional  
recessed feature collars to head and /  
or skirting, framework system,  
access hatches

notes: paint grade casings have a joint  
in each face

detail:

**QUADRA 450/450mm**

date:  
**AUG 2016**

drawn by:  
**AW**

scale:  
**as shown**

paper size:  
**A4**

drawing no:  
**COLUMN CASINGS  
QUADRA 450\_450mm.  
DWG**