

Encasement Ltd
 Peartree Business Centre
 Enterprise Way, Bretton, Peterborough
 Cambridgeshire PE3 8YQ
 t: +44 (0)1733 266 889
 f: +44 (0)1733 268 999
 w: www.encasement.co.uk

standard specification detail:

type: pre-formed plywood casings

ref: circa

thickness: 12mm

length: upto 3m in a single piece

finish: lederex (paint grade) / hpl /
 cpl (laminated)

sustainability: FSC certified with full
 chain of custody

joint detail: aluminium feature
 extrusion channel

accessories: optional optional
 recessed feature collars to head and
 / or skirting / framework system /
 socket patresses / rolled aluminium
 horizontal feature joints

detail:

**CIRCA 550mm
 DIAMETER**

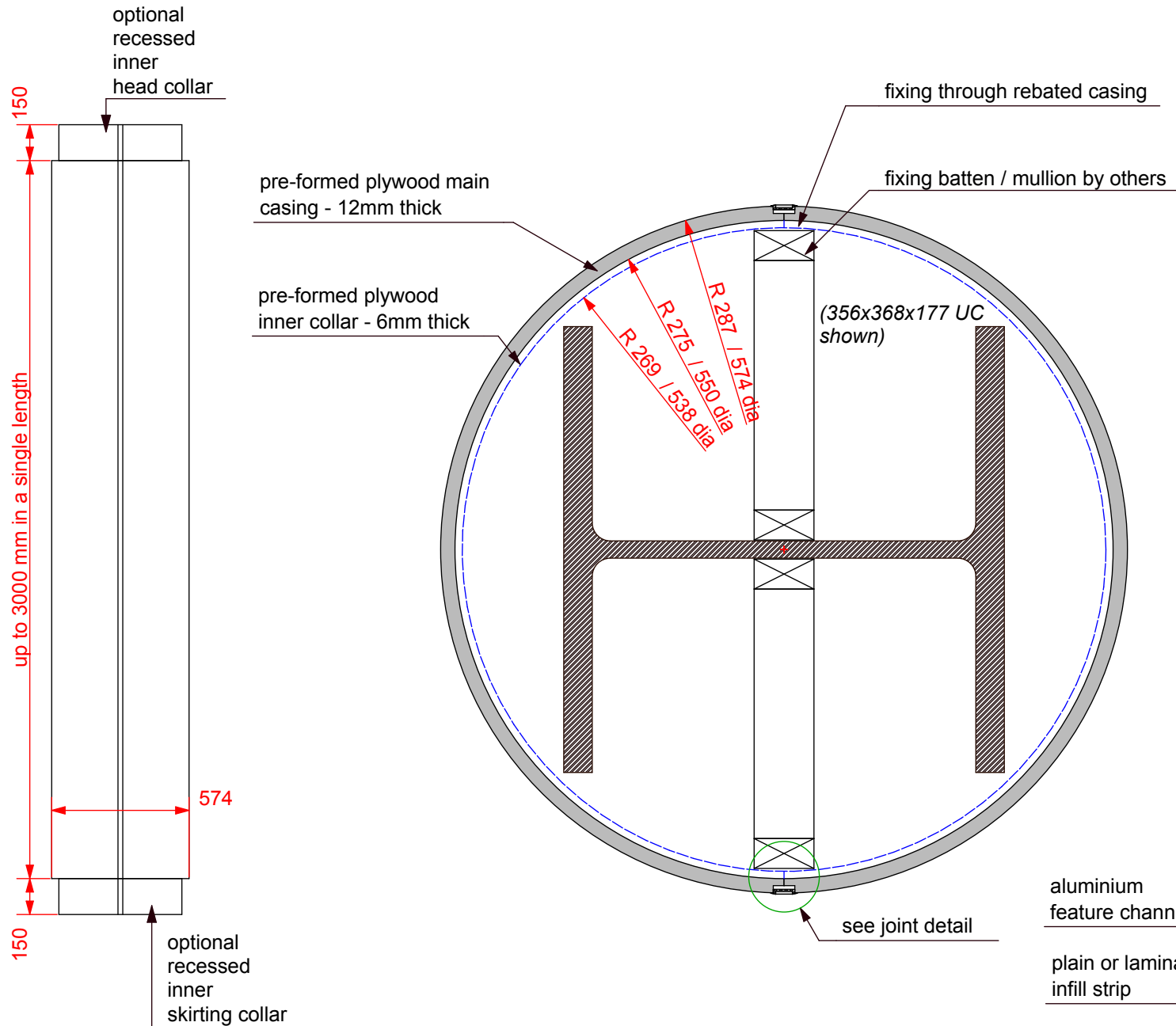
date:
AUG 2016

drawn by:
AW

scale:
as shown

paper size:
A4

drawing no:
**COLUMN CASINGS
 CIRCA 550mm DIA.
 DWG**



ELEVATION
 scale 1:25

PLAN
 scale 1:5

JOINT DETAIL
 scale 1:2