

**Encasement Ltd**  
Peartree Business Centre  
Enterprise Way, Bretton, Peterborough  
Cambridgeshire PE3 8YQ  
t: +44 (0)1733 266 889  
f: +44 (0)1733 268 999  
w: www.encasement.co.uk

**standard specification detail:**

**type:** aluminium / stainless steel / mild steel casings

**ref:** forma

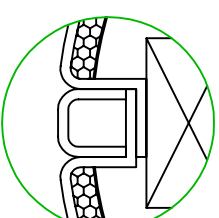
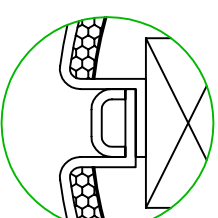
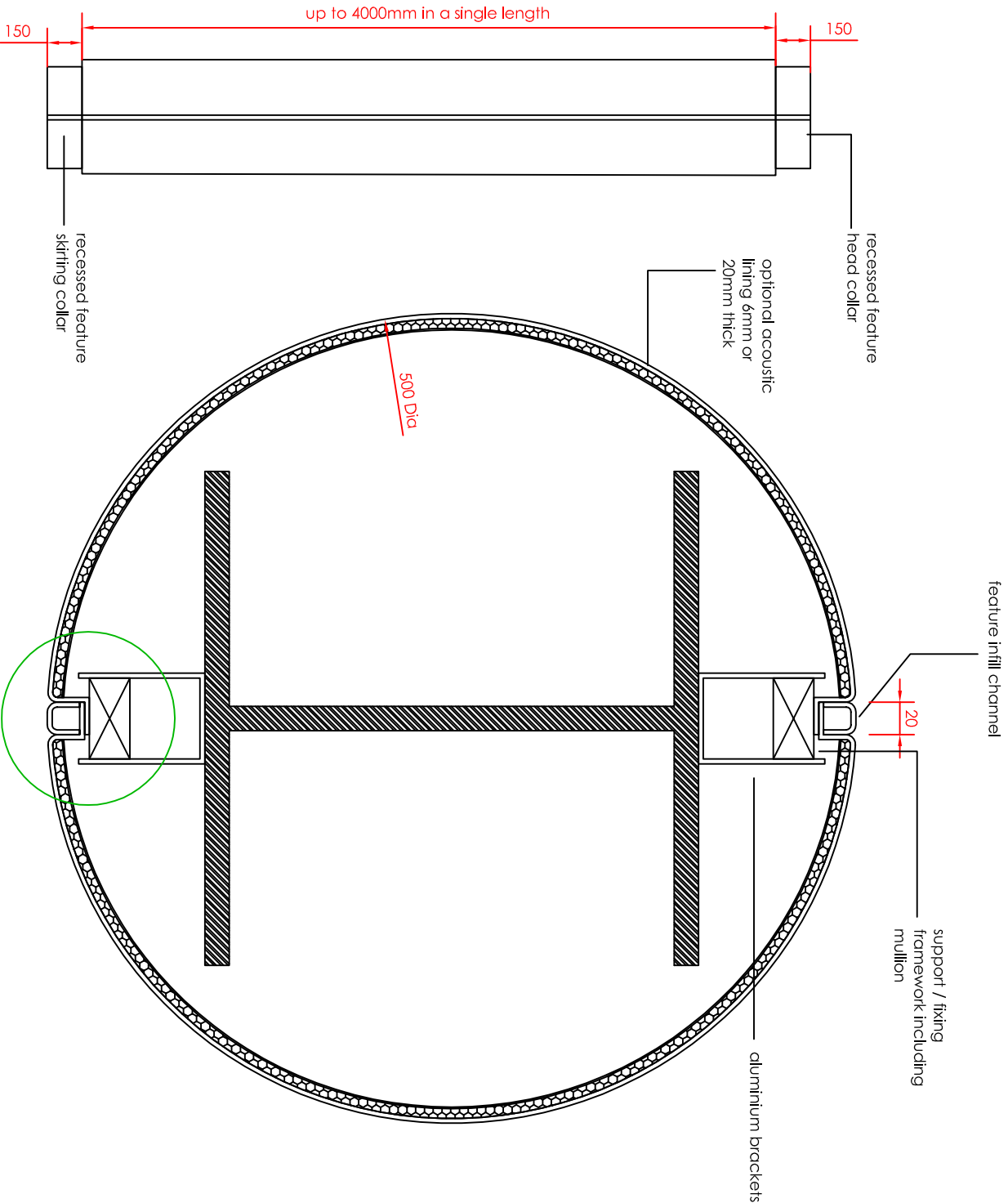
**thickness:** 2mm

**length:** upto 4m in a single piece

**finish:** polyester powder coated / anodised / polished

**joint detail:** feature infill channel

**accessories:** optional recessed feature collars to head and / or skirting, internal stiffening braces, acoustic lining, framework system, access hatches, perforations, laser cutting



JOINT OPTIONS

RECESSED (optional)

FLUSH (standard)

ELEVATION

EXPLODED PLAN

detail:

FORMA 500mm  
DIAMETER

date:

JAN 2012

drawn by:

GB

scale:

NTS

paper size:

A4

drawing no.:

COLUMN CASINGS  
FORMA 500mm DIA'  
.PDF